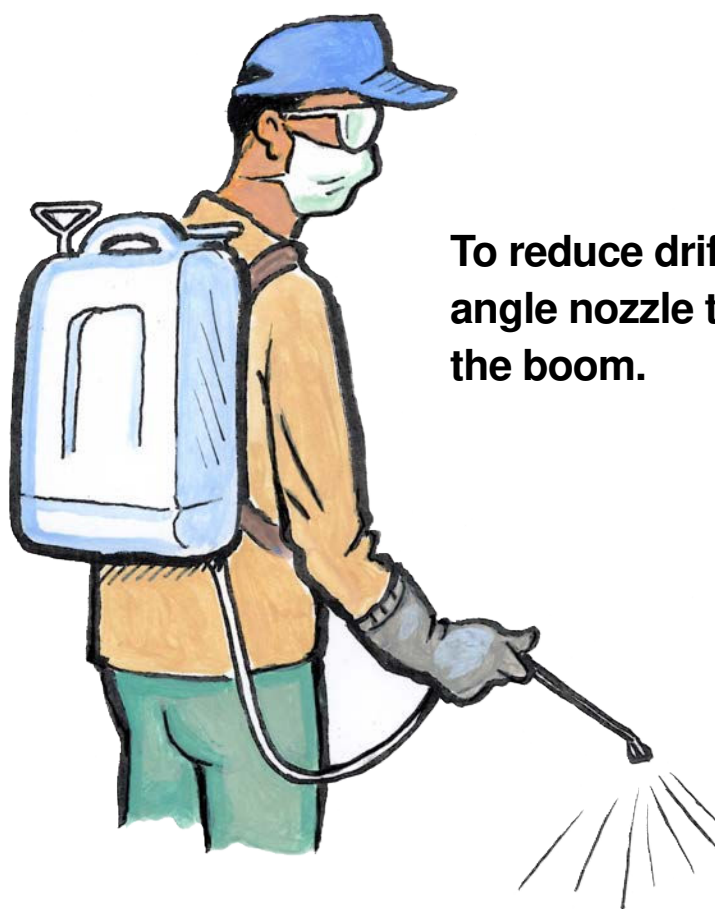


# WHEN APPLYING A PESTICIDE



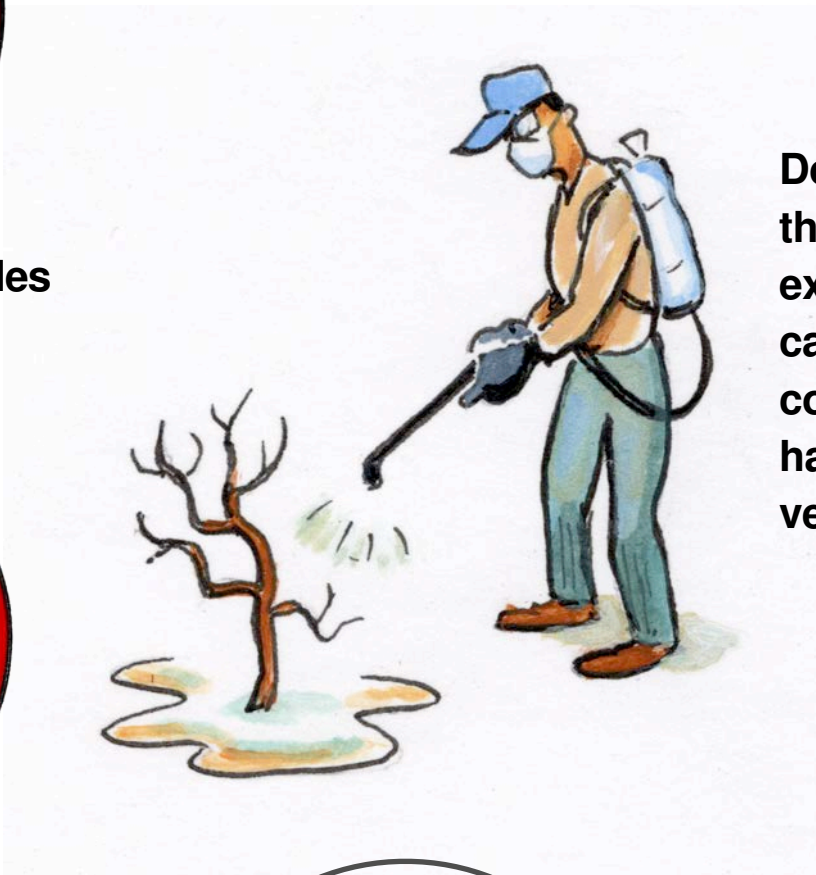
Never apply pesticides on windy days (sustained winds higher than 10 MPH) or when winds are gusty or variable in direction



To reduce drift, use a wider angle nozzle to be able to lower the boom.



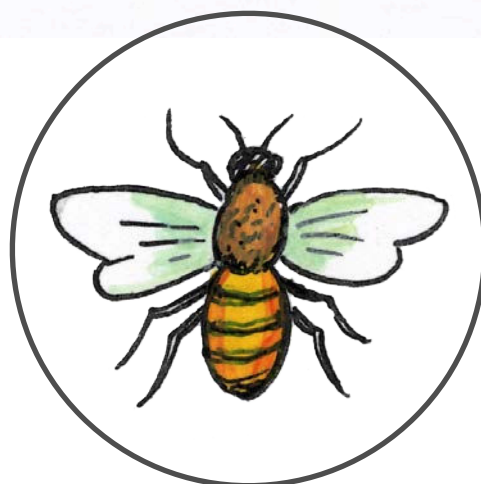
Do not apply pesticides on foggy days



Do not apply pesticides over the recommended rate; excessive application can cause damage to the crop, contaminate water and leave harmful residues on fruit and vegetables.

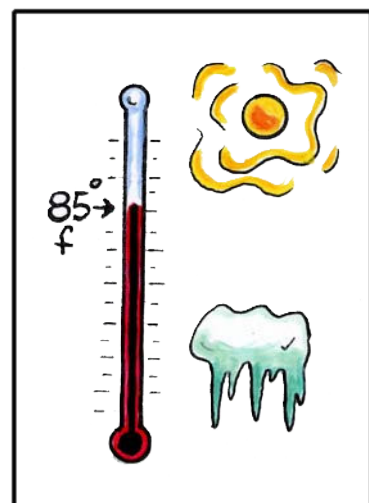
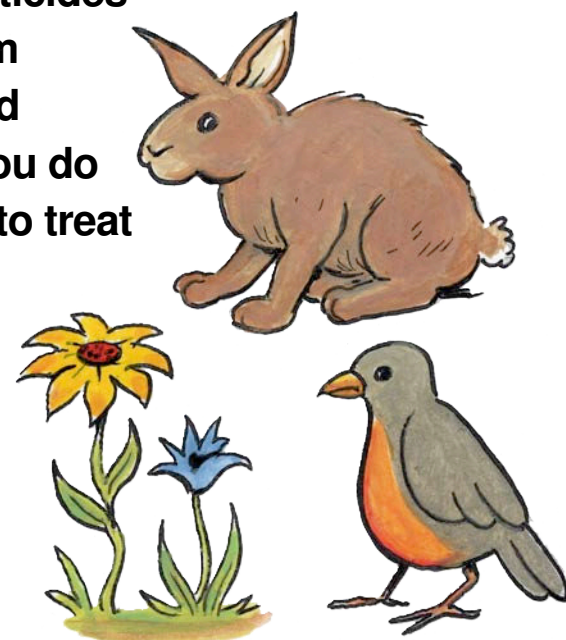


Do not apply pesticides when rainy or forecast to rain within 48 hours



Do not apply when you see bees

Keep pesticides away from plants and wildlife you do not want to treat



Do not apply pesticides on very hot days above 85 degrees Fahrenheit

Funding for this project has been provided in full or in part through a Grant awarded by the Department of Pesticide Regulation.